

Expressive Portraiture

DP 1/2

Nielly Françoise

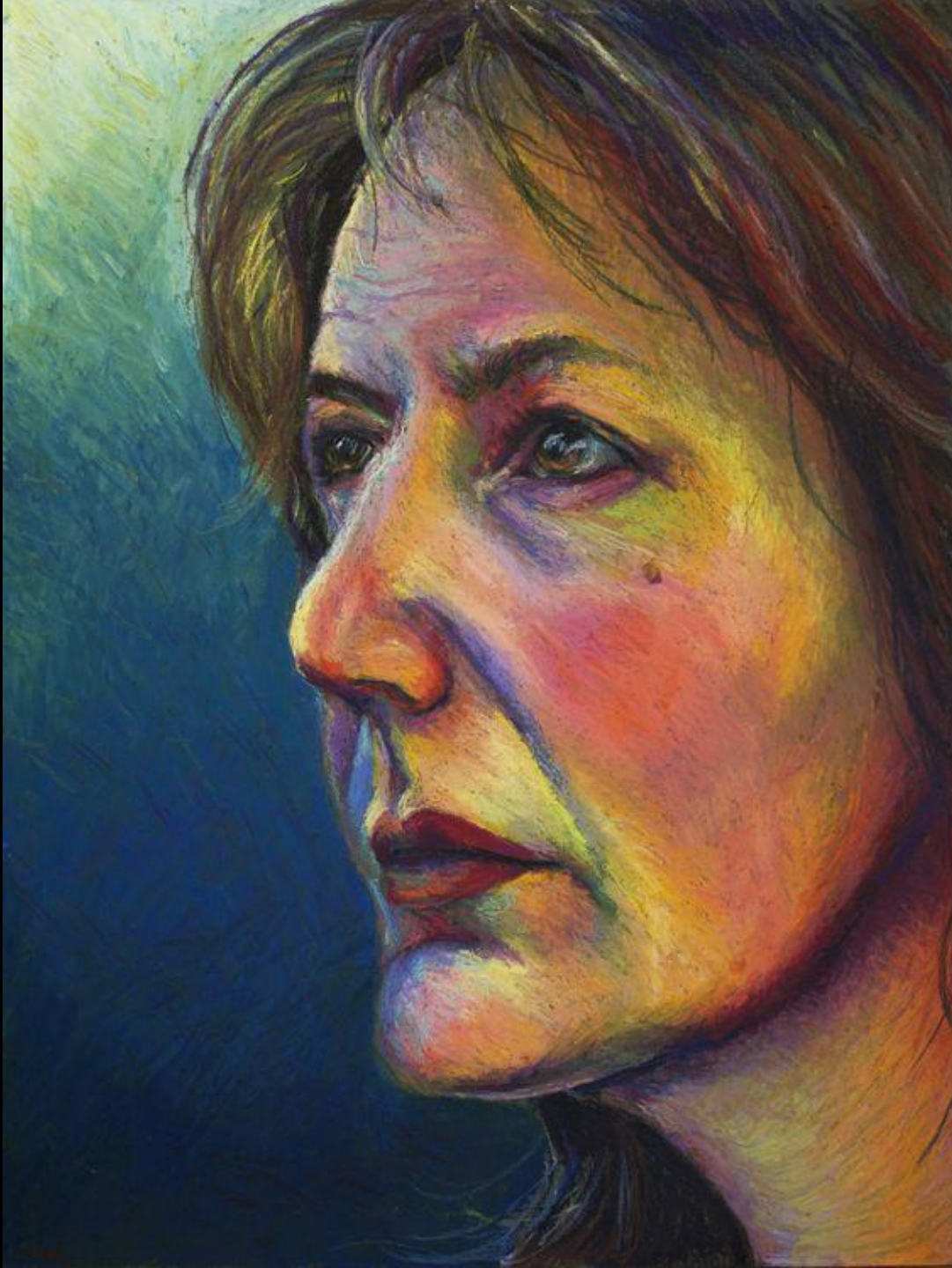
French knife painter who uses thick paint and vibrant colors to convey strong emotion







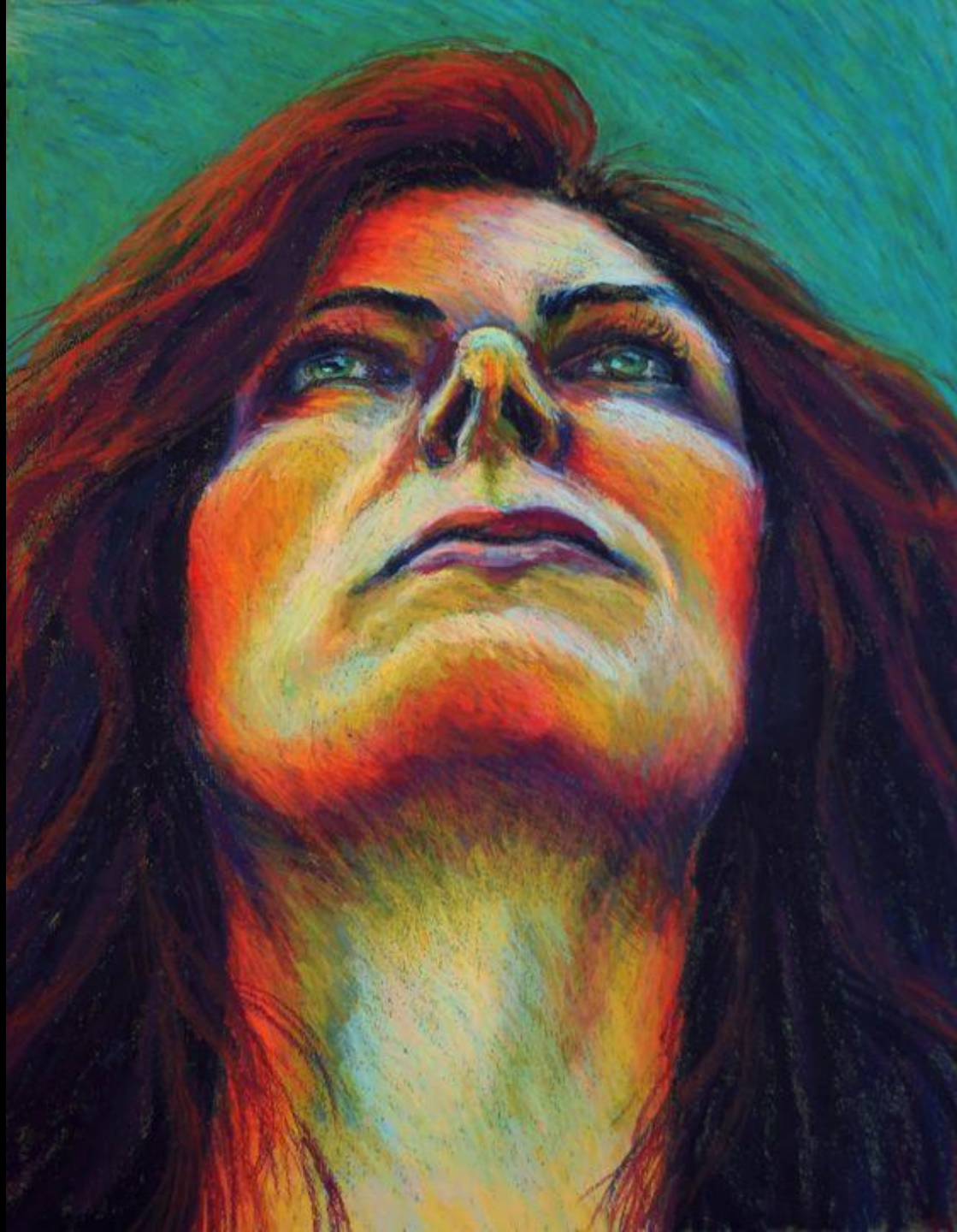




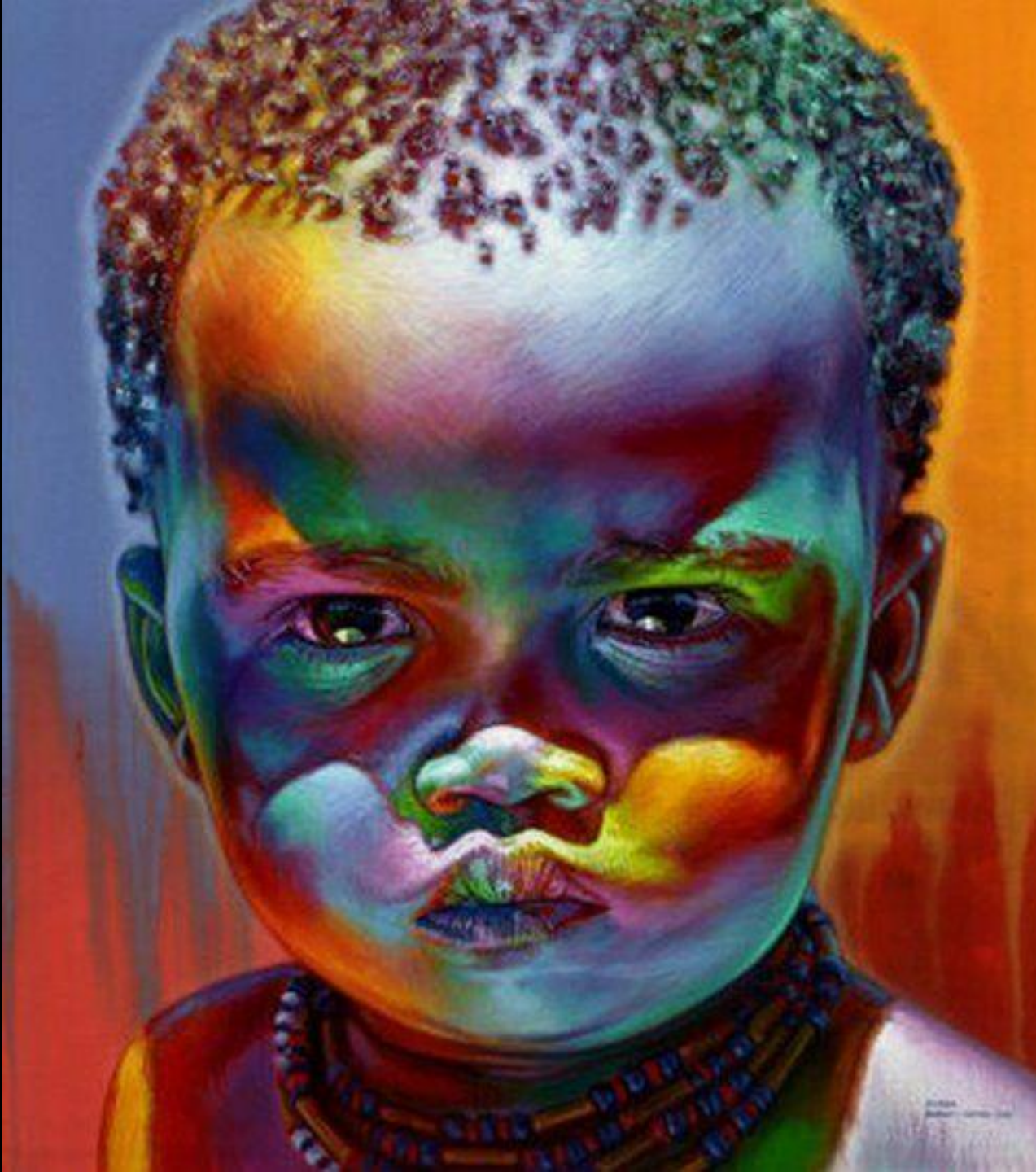
Oil Pastel Color Harmonies

Complementary

***These are *color dominant* harmonies. You will use many different colors to achieve these effects**



Triatic



High Contrast



Analogous

Warm and Cool

The Process

Strong expression

Filtered Lighting

Photo Reference

Grid Format



Oil Pastel Application



KEY CONCEPTS

Graphite + Oil = Muddy Color (erase your grid and lighten your contour lines)

Block 1st color in slowly...pay close attention to mid-tone (consider using a flesh tone)

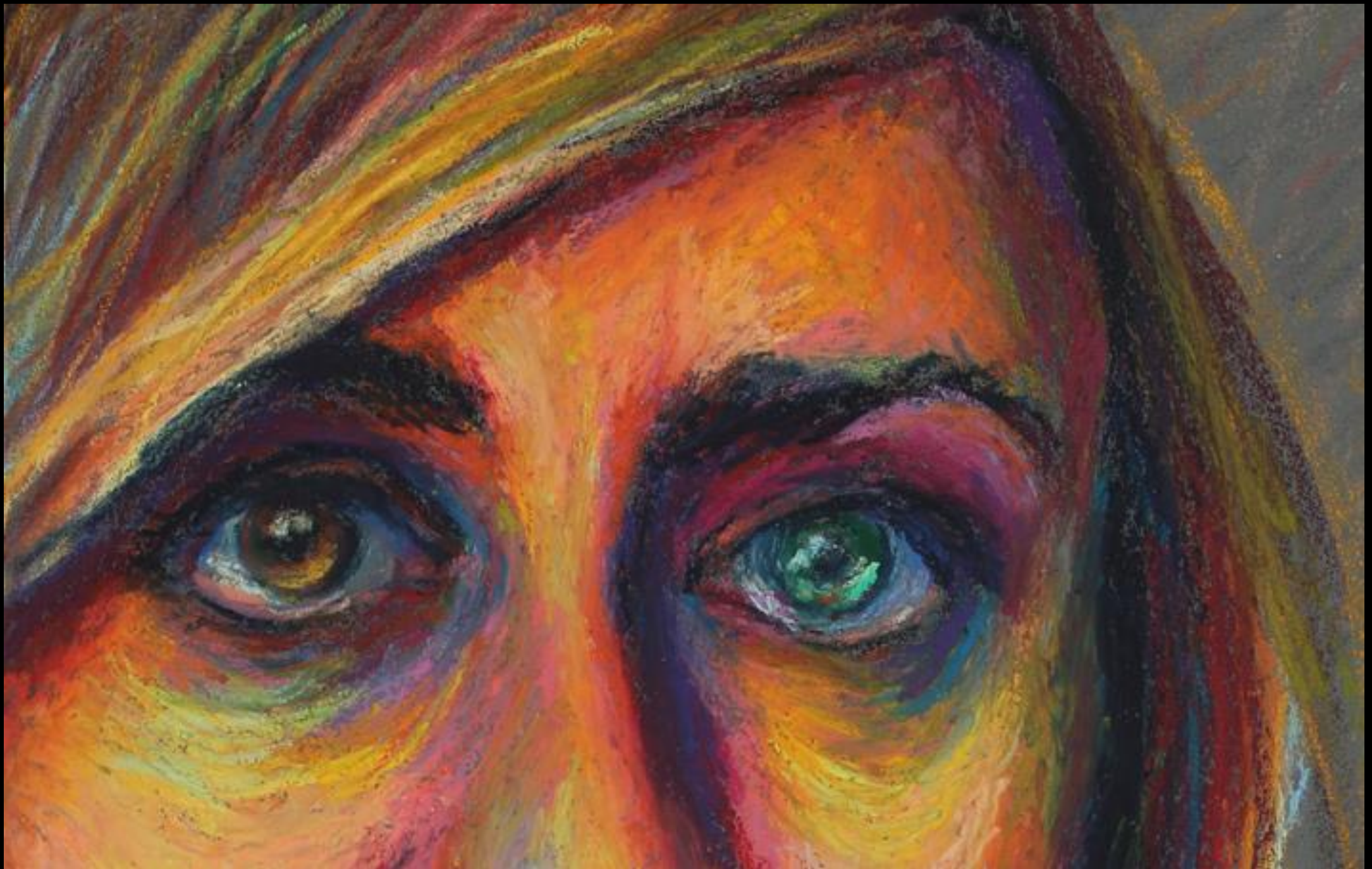
Value trumps color (play with color all you want but stay true to value structure on the black and white copy)

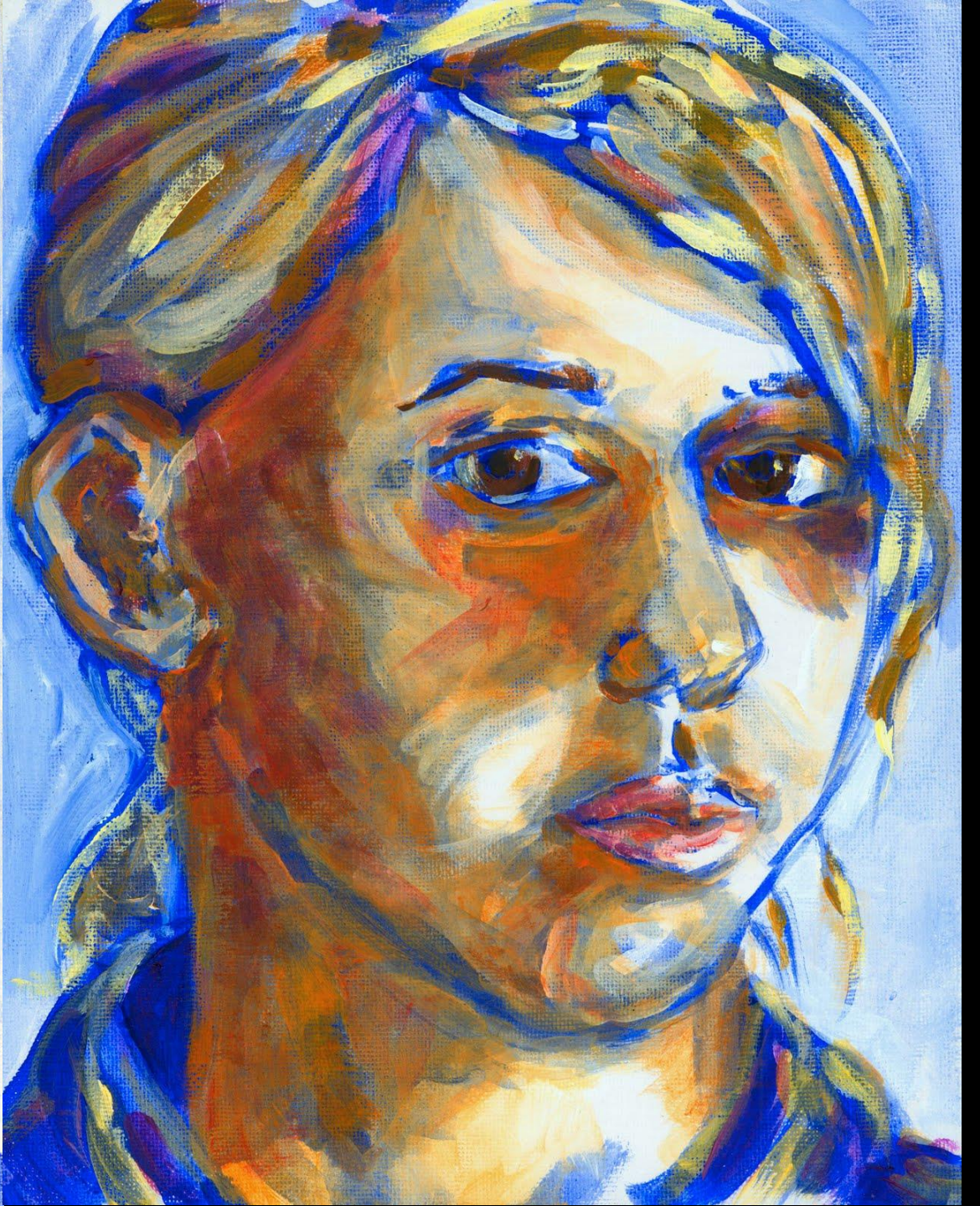
To TEXTURIZE or NOT TO TEXTURIZE, that is the question???



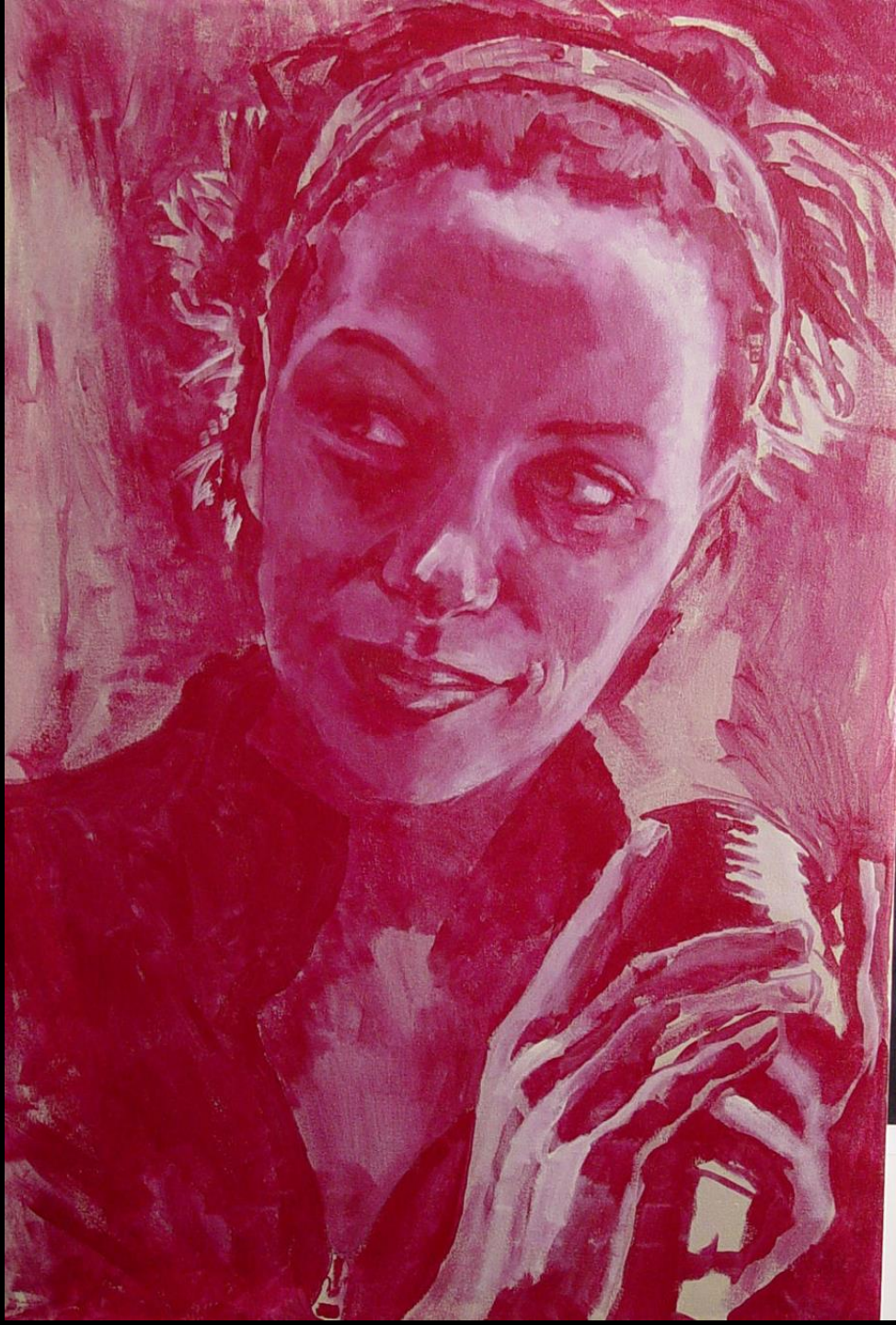






















©2012 IsaacHernandez.com





